

# CALC2QIF

## OpenOffice Calc to QIF data conversion

**CALC2QIF** is the OpenOffice version of XL2QIF. It is a Calc (OpenOffice spreadsheet) macro that converts data to QIF format, the format used by Money, Quicken, GNUCash.... to import transactions.

**CALC2QIF** is optimized for frequent conversions, it supports also different date formats (US, Europe, pre/post 2000).

### Installation

The installation will copy the CALC2QIF library in the standard library directory for OpenOffice on your PC and add a *CALC2QIF* menu with an item to create a QIF file (*Save to QIF*) and an item to import a QIF file (*Load from QIF*).

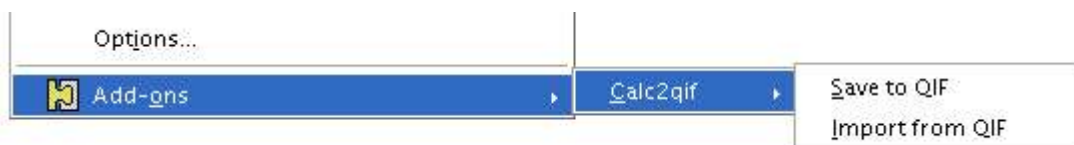
**Note:** to install CALC2QIF you need OpenOffice.org version 1.1.0 or more.

Open the calc2qif.sxc file, click on the **Install CALC2QIF** button and select the type of Menu for Calc2qif:

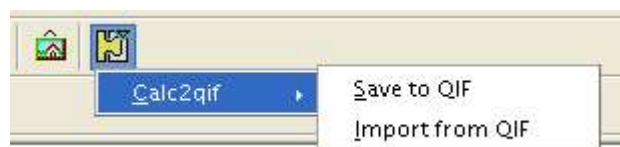
- A new « Calc2qif» entry in the top menu



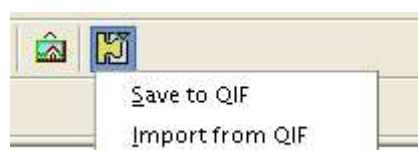
- Or a new «Calc2qif» entry in the Tools > Add-ons menu. On default configuration *Add-ons* item is shown only if at least one add-on uses this facility and then it opens a sub-menu with one menu item per add-on.



At the same time an *Add-ons* icon shows up on the toolbar which opens the same sub-menu.



- Or add directly the Calc2qif items in the Add-ons menu.



Then to complete the installation close all OpenOffice documents, including for Windows, the Quickstarter icon in the task bar:



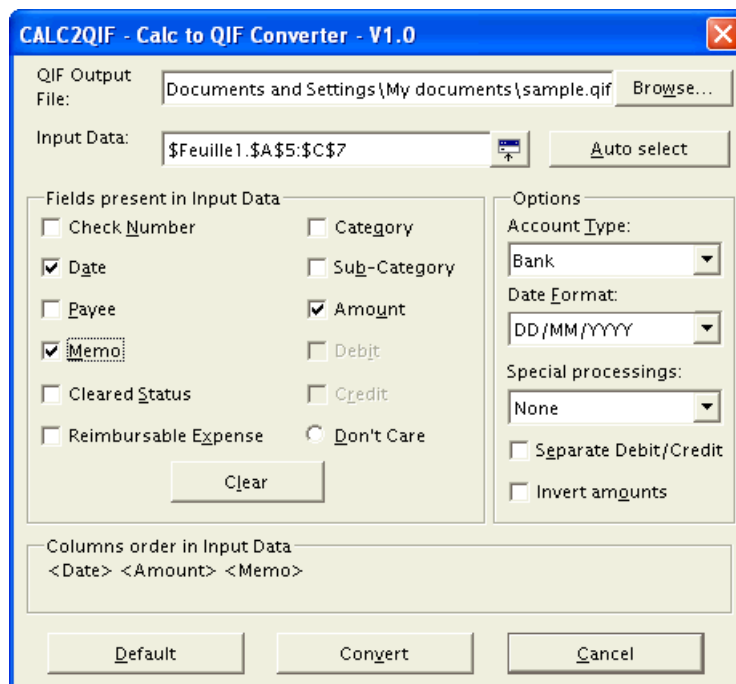
This is needed by OpenOffice to show the newly created menu.  
Then Open the Calc document containing the data to convert.

## Uninstallation

To Uninstall **CALC2QIF**, open the calc2qif.sxc file, click on the **Uninstall CALC2QIF** button, then close all OpenOffice documents, including for Windows, the Quickstarter icon in the task bar.

## Save to QIF

The figure below shows the **Save to QIF** command windows and the parameters that can be changed:



**CALC2QIF** interface is similar to XL2QIF. All **CALC2QIF** parameters are saved automatically and restored when you start again the macro to optimize repetitive conversions.

**CALC2QIF** and XL2QIF work the same way and provide the same conversion features.

You can select the range of data to convert before launching the macro or from the command window.

<b>Parameter</b>	<b>Description</b>																																				
QIF Output File	Select the <b>CALC2QIF</b> output file.																																				
Input data	Select the data cells range. By default this field is set to the selected cells on the active sheet. <b>Note:</b> You should select only the data to convert, not the column titles, for example in the Figure 1 below the Input data are from cell A3 to cell G6.																																				
Auto select	Select the table around the active cell. By default the first line of the table, considered as a title line, is not selected. To select also the first line click a second time on Auto select																																				
Fields in Input Data	To describe the organization of the input data and the order of the corresponding columns. Version 0.94 adds the 'Dont Care' field to define one or several columns whose data should not be converted.																																				
Columns order in Input Data	Shows the order of selection of the data fields. This should represent the order from left to right of the data columns.																																				
Account Type	To select the account type to be put at the beginning of the QIF file. (By default <i>Bank</i> is translated to <i>!Type=Bank</i> )																																				
Date Format	To select the european (Day/Month/Year) ou US (Month/Day/Year) date format. With version 2000 and above of Money and Quicken it is recommended to use a date format with 4 digit for the year.  Dates before or after 2000 are automatically translated to the right Money format, e.g.: xx/yy/99 or xx/yy'00. The dates in the QIF output are generated according to this table: <table border="1"> <thead> <tr> <th><b>Format</b></th> <th><b>. . . -1949</b></th> <th><b>1950-1999</b></th> <th><b>2000- . . .</b></th> </tr> </thead> <tbody> <tr> <td>DD/MM/YYYY</td> <td>DD/MM/YYYY</td> <td>DD/MM/YYYY</td> <td>DD/MM/YYYY</td> </tr> <tr> <td>MM/DD/YYYY</td> <td>MM/DD/YYYY</td> <td>MM/DD/YYYY</td> <td>MM/DD/YYYY</td> </tr> <tr> <td>DD/MM/YY</td> <td>DD/MM/YY</td> <td>DD/MM/YY</td> <td>DD/MM'YY</td> </tr> <tr> <td>MM/DD/YY</td> <td>MM/DD/YY</td> <td>MM/DD/YY</td> <td>MM/DD'YY</td> </tr> <tr> <td>Quicken98 dd/mm/yy</td> <td>DD/MM'YY</td> <td>DD/MM/YY</td> <td>DD/MM/YY</td> </tr> <tr> <td>Quicken98 mm/dd/yy</td> <td>MM/DD'YY</td> <td>MM/DD/YY</td> <td>MM/DD/YY</td> </tr> <tr> <td>Special 'Jul 22' case</td> <td>DD/MM/YYYY</td> <td>DD/MM/YYYY</td> <td>DD/MM/YYYY</td> </tr> <tr> <td>YYYYMMDD</td> <td>DD/MM/YYYY</td> <td>DD/MM/YYYY</td> <td>DD/MM/YYYY</td> </tr> </tbody> </table> <p>*The 'Special 'Jul 22' date format is designed to handle dates without explicit year, in this case the current year is added to the 'month day' from the date column to form the date in the QIF output file.</p>	<b>Format</b>	<b>. . . -1949</b>	<b>1950-1999</b>	<b>2000- . . .</b>	DD/MM/YYYY	DD/MM/YYYY	DD/MM/YYYY	DD/MM/YYYY	MM/DD/YYYY	MM/DD/YYYY	MM/DD/YYYY	MM/DD/YYYY	DD/MM/YY	DD/MM/YY	DD/MM/YY	DD/MM'YY	MM/DD/YY	MM/DD/YY	MM/DD/YY	MM/DD'YY	Quicken98 dd/mm/yy	DD/MM'YY	DD/MM/YY	DD/MM/YY	Quicken98 mm/dd/yy	MM/DD'YY	MM/DD/YY	MM/DD/YY	Special 'Jul 22' case	DD/MM/YYYY	DD/MM/YYYY	DD/MM/YYYY	YYYYMMDD	DD/MM/YYYY	DD/MM/YYYY	DD/MM/YYYY
<b>Format</b>	<b>. . . -1949</b>	<b>1950-1999</b>	<b>2000- . . .</b>																																		
DD/MM/YYYY	DD/MM/YYYY	DD/MM/YYYY	DD/MM/YYYY																																		
MM/DD/YYYY	MM/DD/YYYY	MM/DD/YYYY	MM/DD/YYYY																																		
DD/MM/YY	DD/MM/YY	DD/MM/YY	DD/MM'YY																																		
MM/DD/YY	MM/DD/YY	MM/DD/YY	MM/DD'YY																																		
Quicken98 dd/mm/yy	DD/MM'YY	DD/MM/YY	DD/MM/YY																																		
Quicken98 mm/dd/yy	MM/DD'YY	MM/DD/YY	MM/DD/YY																																		
Special 'Jul 22' case	DD/MM/YYYY	DD/MM/YYYY	DD/MM/YYYY																																		
YYYYMMDD	DD/MM/YYYY	DD/MM/YYYY	DD/MM/YYYY																																		
Special processings	To select a special processing of the data before writing to the QIF file, if necessary. <ul style="list-style-type: none"> <li>• Extract transaction date and payee from memo field for VISA BNP Net statements.</li> <li>• Extract Payee and Check number from memo field for Société Générale statements</li> <li>• Use the comma as the decimal separator in the QIF file instead of the point.</li> <li>• QIF format compatible Quicken version 6 et before (without U tag).</li> </ul>																																				
Separate Debit/Credit	To select the way amounts are organized: - either a single Amount column (unckecked), - either two separated Debit and Credit columns (checked).																																				
Invert amounts	To invert the amount sign. This is useful for some credit card statements where payments are positive (the amount you owe to the bank) instead of negative as expected by Money (payments are debits). This option is invalid when you choose to have separate debit and credit column since the sign is explicit in this case: debits are treated as negative and credits are treated as positive by CALC2QIF.																																				

## Save to QIF – Calc data organisation

Calc data should be arranged in columns sorted by type of field. There should be no gap between the columns (selection of separated areas is not supported) but the order and the number of the columns can vary: the exact description of the Calc data is done thru the **Save to QIF** command window.

The field '**Don't Care**' can be used to define one or several columns that don't contain valid data for conversion.

For Example:

Figure 1

	A	B	C	D	E	F	G
1							
2	Date	Number	Payee	Category	Amount	Clear Status	Memo
3	14/03/01	1		Cat1	123,45		Check1
4	15/03/01	2		Cat2	1235,24		Card1
5	16/03/01	3		Cat3	5478,45		Check2
6	17/03/01	4		Cat4	100		Card2
7							

Note the selection area that contains only valid data cells and not the columns titles.

## Split transactions

The **Save to QIF** command handles split transaction.

The Calc data should follow these guidelines for split transactions:

- Each split transaction must be described on several lines,
- The first line should contain the date of the transaction,
- Then one line for each element of the split with an empty date cell or a date cell containing an «S», then the amount and optionally the category, sub-category and memo. Only these fields will be exported to the QIF file for each split element.

Figure 2 Split transaction sample

	A	B	C	D	E	F	G
1							
2	Date	Number	Payee	Category	Amount	Clear Status	Memo
3	30/11/02		Payee1	Cat1	-26,00		Split1
4				Cat1	-11,00		category Cat1
5				Cat2	-15,00		category Cat2
6	30/11/02		Payee2	Cat3	-84,00		memo2 REG1
7	30/11/02		Payee3	Cat4	-45,00		Split2
8	S			Cat4	-33,00		category Cat4
9	S			Cat5	-12,00		category Cat5
10							

## Load from QIF

The figure below shows the **Load from QIF** command windows and the parameters that can be changed:



Parameter	Description
QIF Input File	Select the <b>CALC2QIF</b> input file.
Date Format	To select how to handle the dates from the QIF file. The <b>Sytem Default</b> should cover most of the cases, however if there are some issues with the date handling it's possible to specify explicitly if the QIF date format is: <ul style="list-style-type: none"> <li>. european (Day/Month/Year),</li> <li>. US (Month/Day/Year),</li> <li>. or Quicken 98</li> </ul> Years on 2 or 4 digits are automatically handled.
Keep cells format	To keep the cells format during import and clear only the cell content. By default both the cells content and format are cleared during import.

## Known limitations

**It is recommended to do a backup of your Money or Quicken data before importing a .qif file generated by CALC2QIF.**

**CALC2QIF** is an OpenOffice macro written initially to solve personal needs of conversion between spreadsheet data and Money. These needs being shared by several people I've decided to share my work and to provide this macro as a freeware on the x12qif web site (<http://x12qif.chez.tiscali.fr/>). However it's not guaranteed bug free. I'm doing my best to test CALC2QIF but if you find any issue please [report it](#) to me.

Features not supported by V1.0:

- No Limitations, Investment accounts are supported in V1.0

## Feedbacks

All your [feedbacks](#) are welcome to improve **CALC2QIF**.